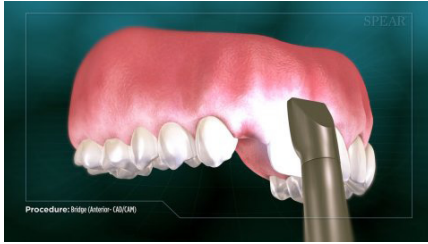


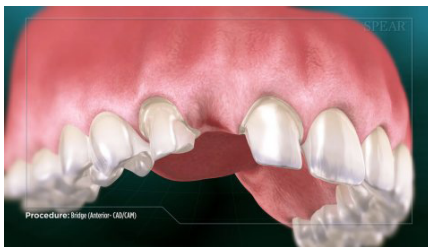
# Bridge (Anterior-CAD/CAM)



A bridge can be used to replace a missing tooth and restore the appearance and function of your mouth. It is a single restoration that uses the teeth neighboring the open space for support. It is typically made of ceramic or a composite material.



Your doctor begins by using state-of-the-art technology to image your teeth in 3-D, which feeds into a computer to aid in designing the restoration. This technology makes it possible for you to complete your bridge in a single appointment.



Next, the teeth neighboring the space are prepared to make room for the bridge. They will form the support structure for your new tooth.



At this point the area is scanned again, and creation of the bridge begins. It is digitally crafted right in your doctor's office while you wait.



When the bridge is complete, your doctor will make final adjustments and cement it into place.



Once completed, the area is now restored to optimal function and appearance.

